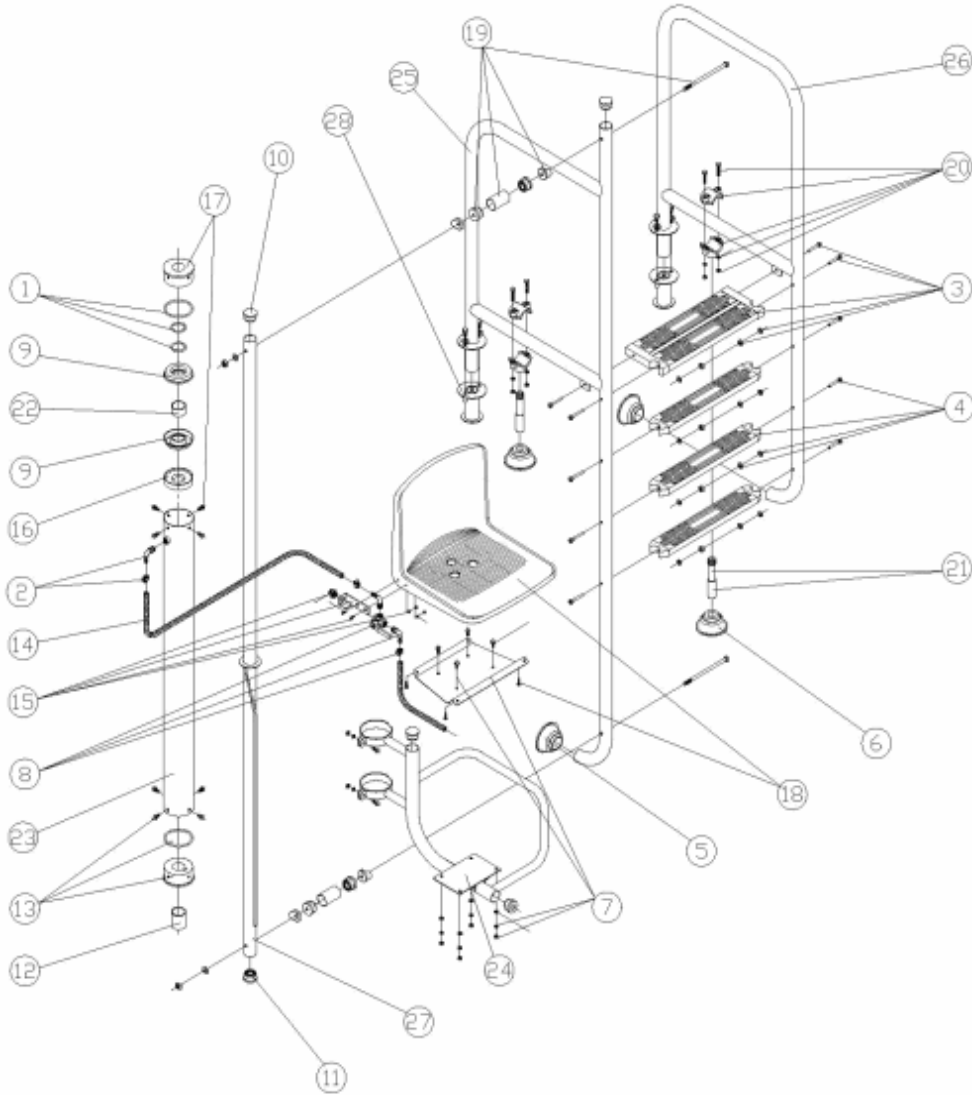


CODIGO 11277, 15219, 28619, 28620, 28621, 28622

DESCRIPCION: ELEVADOR HIDRÁULICO



ESPAÑOL

POS	CODIGO	DESCRIPCION	POS	CODIGO	DESCRIPCION
1	4401011501	JUNTAS ELEVADOR	16	4401011516	APOYO JUNTA
2	4401011502	CODO Y BRIDA	17	4401011517	TAPA GUIA SUPERIOR
3	4401011503	PALDAÑO SEGURIDAD ELEVADOR	18	4401011518	ASIENTO
4	4401011504	PELDAÑO LUXE ELEVADOR	19	4401011519	CJTO. ENLACE UNION
5	4401010501	TOPE ARTICULADO	20	4401011520	BRIDA APOYO
6	4401011506	TOPE ARTICULADO D.28	21	4401011521	TUBO APOYO
7	4401011507	PLACA ASIENTO	22	4401011505	CASQUILLO TOPE INFERIOR
8	4401011508	VALVULA 3 VIAS COMPLETA	23	11277R0600	CILINDRO ELEVADOR HIDRAULICO
9	4401011509	JUNTA ELEVADOR	24	11277R0400	SOPORTE ASIENTO
10	4401070208	CASQUILLO TAPADO	25	* 11277R0800	PASAMANO LARGO L=1000
11	4401050402	CASQUILLOS GUIA	25	* 15219R0100	PASAMANO LARGO L=650
12	4401011512	CASQUILLO DE SEGURIDAD	26	* 11277R0900	PASAMANO CORTO L=1000
13	4401011513	CASQUILLO GUIA	26	* 15219R0200	PASAMANO CORTO L=650
14	4401011514	TUBO ENTRADA 0,9 M	27	11277R0100	CONJUNTO TUBO GUIA
15	4401011515	SOPORTE VALVULA	28	00143	ANCLAJE

CODIGO **11277, 15219, 28619, 28620, 28621, 28622**

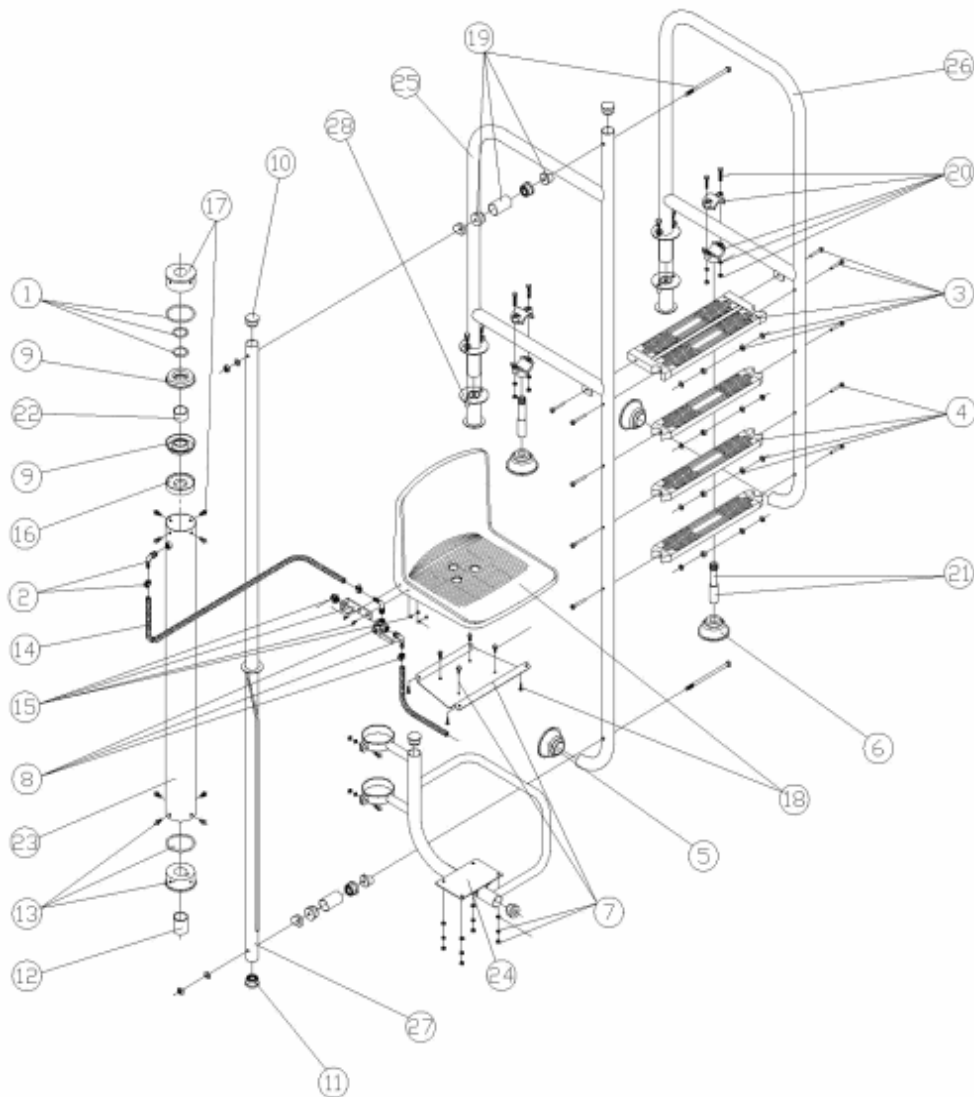
DESCRIPCION: ELEVADOR HIDRÁULICO

OBSERVACIONES

POS	CODIGO	OBSERVACIONES
25	11277R0800	PARA 11277, 28620
25	15219R0100	PARA 15219, 28619
26	11277R0900	PARA 11277, 28620
26	15219R0200	PARA 15219, 28619

CODE 11277, 15219, 28619, 28620, 28621, 28622

DESCRIPTION: ÉLÉVATEUR HYDRAULIQUE



FRANCAIS

POS	CODE	DESCRIPTION	POS	CODE	DESCRIPTION
1	4401011501	JOINT ELEVATEUR	16	4401011516	SUPPORT DE JOINT
2	4401011502	COUDE ET BRIDE	17	4401011517	COUVERCLE GUIDE SUPERIEUR
3	4401011503	MARCHE SECURITE ELEVATEUR	18	4401011518	SEAT
4	4401011504	MARCHE LUXE ELEVATEUR	19	4401011519	ENSEMBLE RACCORD UNION
5	4401010501	TAMPON ARTICULE	20	4401011520	BRIDE DE SUPPORT
6	4401011506	TAMPON ARTICULE D 28	21	4401011521	TUBE DE SUPPORT
7	4401011507	PLAQUE SUPPORT DE SIEGE	22	4401011505	DOUILLES
8	4401011508	VANNE 3 VOIES COMPLETE	23	11277R0600	CYLINDRE ELEVATEUR
9	4401011509	JOINT ELEVATEUR	24	11277R0400	PROTECTION SIEGE
10	4401070208	BOUCHONS	25	* 11277R0800	MAIN COURAGE LARGE L=1000
11	4401050402	DOUILLES	25	* 15219R0100	MAIN COURAGE LARGE L=650
12	4401011512	DOUILLE DE SECURITE	26	* 11277R0900	MAIN COURANTE COURTE L=1000
13	4401011513	DOUILLE GUIDE	26	* 15219R0200	MAIN COURANTE COURTE L=650
14	4401011514	TUBE ENTREE 0,9 M.	27	11277R0100	ENSEMBLE TUBE GUIDE
15	4401011515	SUPPORT VANNE	28	00143	ANCRAGE

CODE **11277, 15219, 28619, 28620, 28621, 28622**

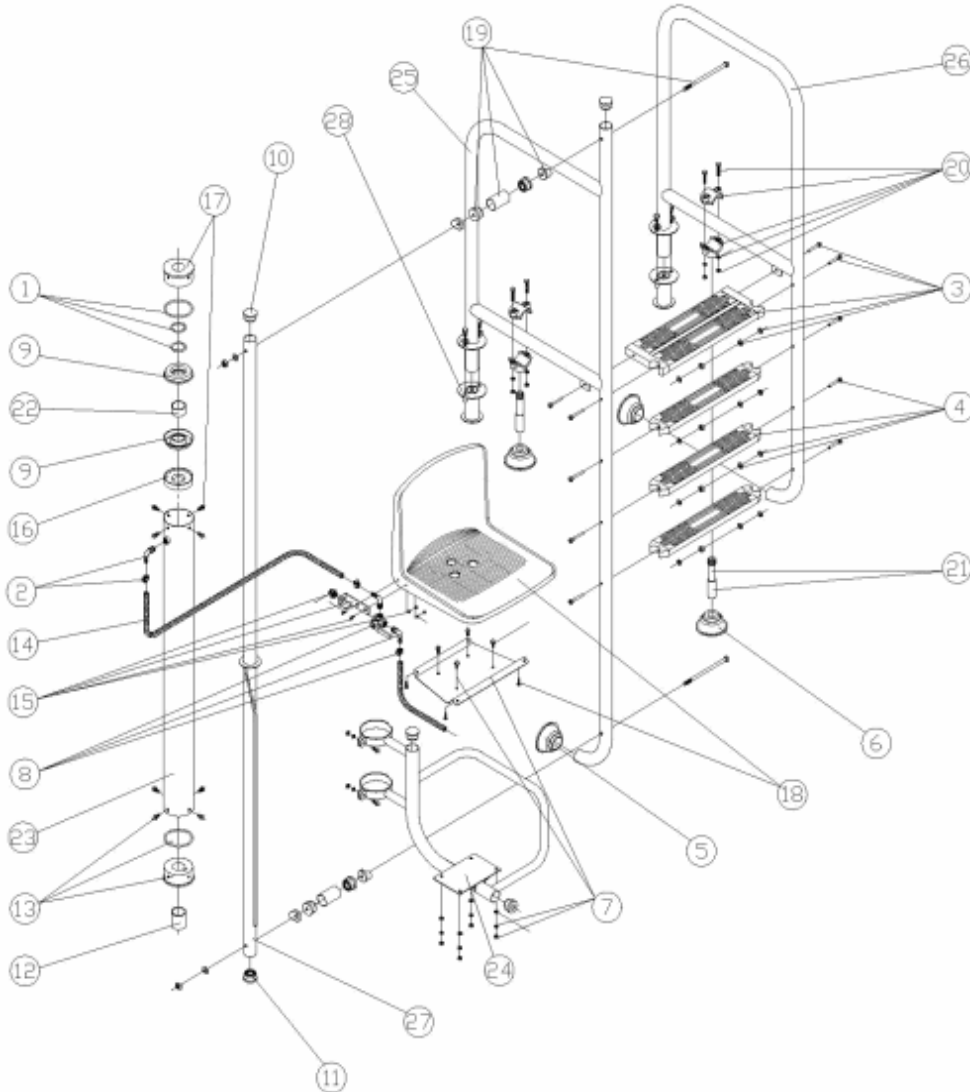
DESCRIPTION: **ÉLÉVATEUR HYDRAULIQUE**

OBSERVATIONS

POS	CODE	OBSERVATIONS
25	11277R0800	PARA 11277, 28620
25	15219R0100	PARA 15219, 28619
26	11277R0900	PARA 11277, 28620
26	15219R0200	PARA 15219, 28619

CODE 11277, 15219, 28619, 28620, 28621, 28622

DESCRIPTION: HYDRAULIC LIFT



ENGLISH

POS	CODE	DESCRIPTION	POS	CODE	DESCRIPTION
1	4401011501	LIFTER GASKETS	16	4401011516	SEAL SUPPORT
2	4401011502	ELBOW AND FLANGE	17	4401011517	SUPERIOR GUIDE COVER
3	4401011503	LIFTER SAFETY TREAD	18	4401011518	SIÈGE
4	4401011504	LIFTER DELUXE TREAD	19	4401011519	UNION KIT
5	4401010501	ARTICULATED FOOT PAD	20	4401011520	SUPPORT DASP
6	4401011506	ARTICULATED FOOT PAD D 28	21	4401011521	SUPPORT PIPE
7	4401011507	CHAIR PLATE	22	4401011505	SOCKETS
8	4401011508	COMPLETE 3-WAY VALVE	23	11277R0600	HYDRAULIC CYLINDER TUBE
9	4401011509	LIFTER GASKET	24	11277R0400	SEAT SUPPORT
10	4401070208	PLUG	25	* 11277R0800	LARGE HANDRAIL L=1000
11	4401050402	BUSHES	25	* 15219R0100	LARGE HANDRAIL L=650
12	4401011512	SECURITY SOCKET	26	* 11277R0900	SMALL HANDRAIL L=1000
13	4401011513	GUIDE SOCKET	26	* 15219R0200	SMALL HANDRAIL L=650
14	4401011514	PIPE 0,9 M.	27	11277R0100	MECHANICAL TUBE
15	4401011515	VALVE SUPPORT	28	00143	ANCHOR

CODE **11277, 15219, 28619, 28620, 28621, 28622**

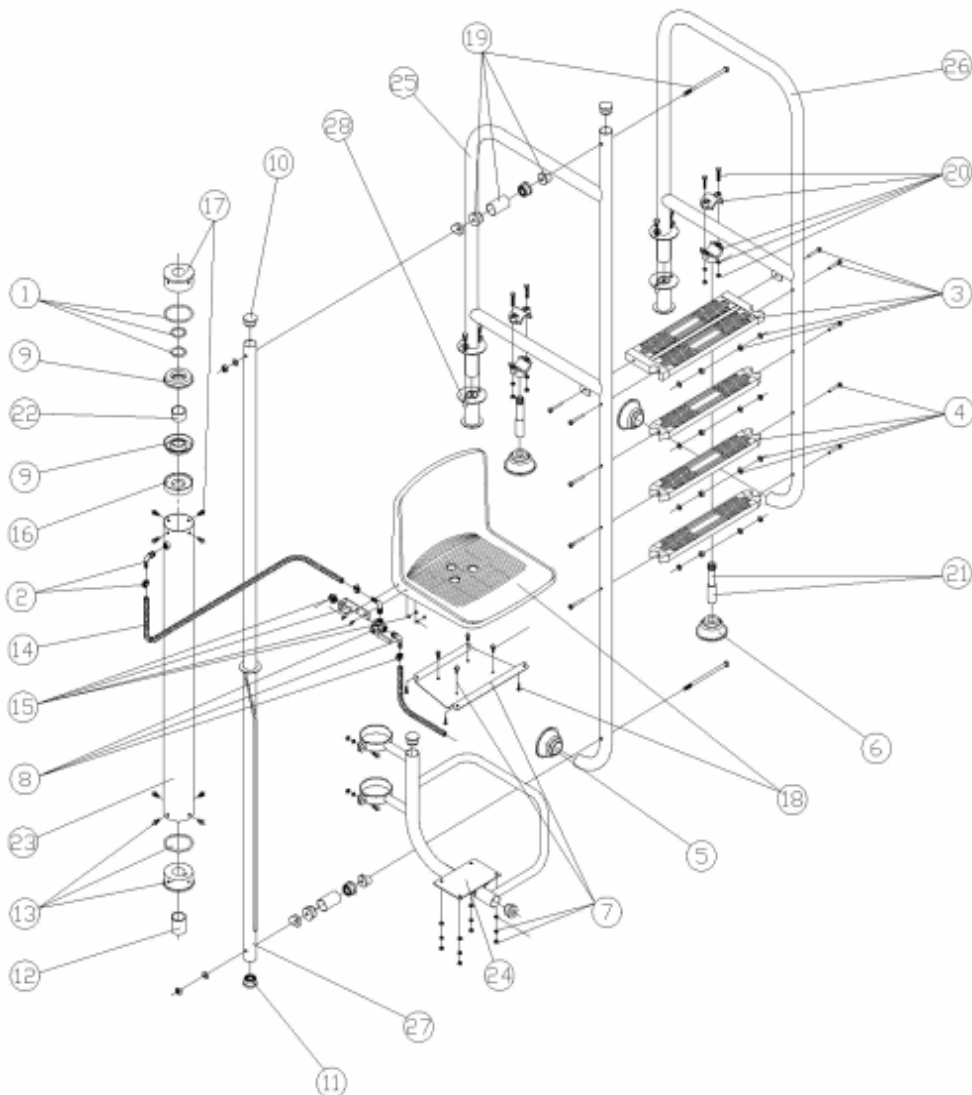
DESCRIPTION: **HYDRAULIC LIFT**

OBSERVATIONS

POS	CODE	OBSERVATIONS
25	11277R0800	PARA 11277, 28620
25	15219R0100	PARA 15219, 28619
26	11277R0900	PARA 11277, 28620
26	15219R0200	PARA 15219, 28619

CODICE 11277, 15219, 28619, 28620, 28621, 28622

DESCRIZIONE: **ELEVATORE IDRAULICO**



ITALIANO

POS	CODICE	DESCRIZIONE	POS	CODICE	DESCRIZIONE
1	4401011501	GUARNIZIONI SOLLEVATORE	16	4401011516	SUPPORTO GUARNIZIONE
2	4401011502	GOMITO E FLANGIA	17	4401011517	TAPPO GUIDA SUPERIORE
3	4401011503	GRADINO SICUREZZA SOLLEVATORE	18	4401011518	SEIDA
4	4401011504	GRADINO LUSO SOLLEVATORE	19	4401011519	KIT ATTACO SEIDA
5	4401010501	PIEDINO SNODABILE	20	4401011520	PRESA A STAFFA SOSTEGNO
6	4401011506	PIEDINO SNODABILE D 28	21	4401011521	TUBO SOSTENGO
7	4401011507	PIASTRA SEGGIOLA	22	4401011505	PASSANTI
8	4401011508	VALVOLA A 3 VIE COMPLETA	23	11277R0600	CILINDRO ELEVATORE
9	4401011509	GUARNIZIONE SOLLEVATORE	24	11277R0400	SOSTEGNO SEDILE
10	4401070208	PASSANTE CIECO	25	* 11277R0800	CORRIMANO LUNGO L=1000
11	4401050402	PASSANTI	25	* 15219R0100	CORRIMANO LUNGO L=650
12	4401011512	TAPPO DI SICUREZZA	26	* 11277R0900	CORRIMANO CORTO L=1000
13	4401011513	TAPPO CON GUIDA	26	* 15219R0200	CORRIMANO CORTO L=650
14	4401011514	TUBO ENTRATA 0,9 M.	27	11277R0100	KIT CILINDRO GUIDA
15	4401011515	SUPPORTO VALVOLA	28	00143	ANCORAGGIO

CODICE **11277, 15219, 28619, 28620, 28621, 28622**

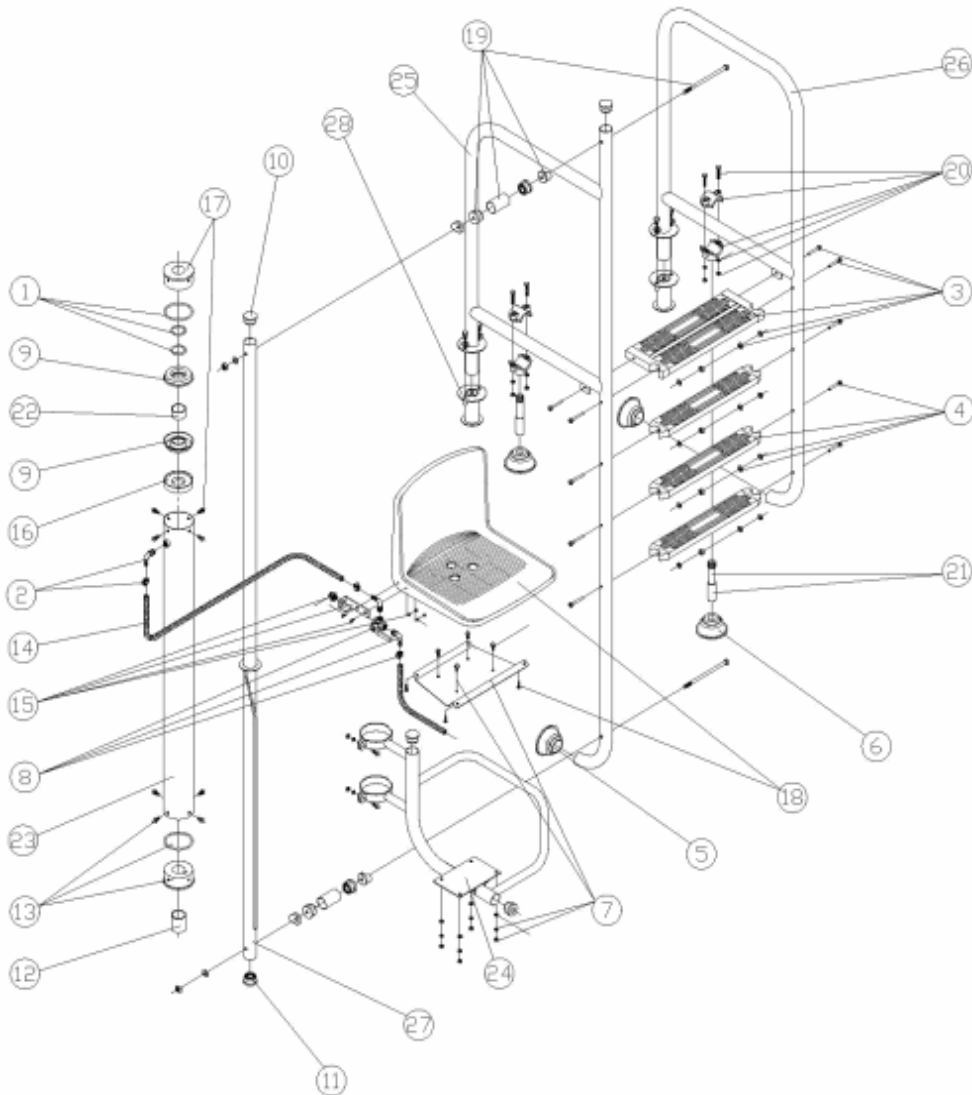
DESCRIZIONE: ELEVATORE IDRAULICO

OSSERVAZIONI

POS	CODICE	OSSERVAZIONI
25	11277R0800	PARA 11277, 28620
25	15219R0100	PARA 15219, 28619
26	11277R0900	PARA 11277, 28620
26	15219R0200	PARA 15219, 28619

CODE 11277, 15219, 28619, 28620, 28621, 28622

BESCHREIBUNG: HYDRAULISCHER AUFZUG



DEUTSCH

POS	CODE	BESCHREIBUNG	POS	CODE	BESCHREIBUNG
1	4401011501	DICHTUNGEN LIFT	16	4401011516	DICHTUNGSLAGER
2	4401011502	WINKEL UND FLANSCH	17	4401011517	OBERER FÜHRUNGSDECKEL
3	4401011503	STUFE SICHERHEIT LIFT	18	4401011518	SITZ
4	4401011504	STUFE LUXE LIFT	19	4401011519	VERBINDUNGSKIT
5	4401010501	GELENKFUSS HOCHBECKENLEITER	20	4401011520	STÜTZUNGSSCHELLE
6	4401011506	GELENKFUSS HOCHBECKENLEITER D 28	21	4401011521	STÜTZROHR
7	4401011507	SITZBEFESTIGUNG RETTUNGSSCHWIMMERSITZ	22	4401011505	LAGERBUCHSEN
8	4401011508	3-WEGE VENTIL KOMPLETT	23	11277R0600	ZYLINDER LIFT
9	4401011509	DICHTUNG LIFT	24	11277R0400	SITZHALTERUNG
10	4401070208	ABDECKKAPPEN	25	* 11277R0800	HALTEGRIFF LANG L=1000
11	4401050402	LAGERBUCHSEN	25	* 15219R0100	HALTEGRIFF LANG L=650
12	4401011512	SICHERHEITSHÜLSE	26	* 11277R0900	HALTEGRIFF KURZ L=1000
13	4401011513	FÜHRUNGSHÜLSE	26	* 15219R0200	HALTEGRIFF KURZ L=650
14	4401011514	EINLASSROHR	27	11277R0100	EINHEIT FÜHRUNGSRHOR
15	4401011515	VENTILBEFESTIGUNG	28	00143	VERANKERUNG

CODE **11277, 15219, 28619, 28620, 28621, 28622**

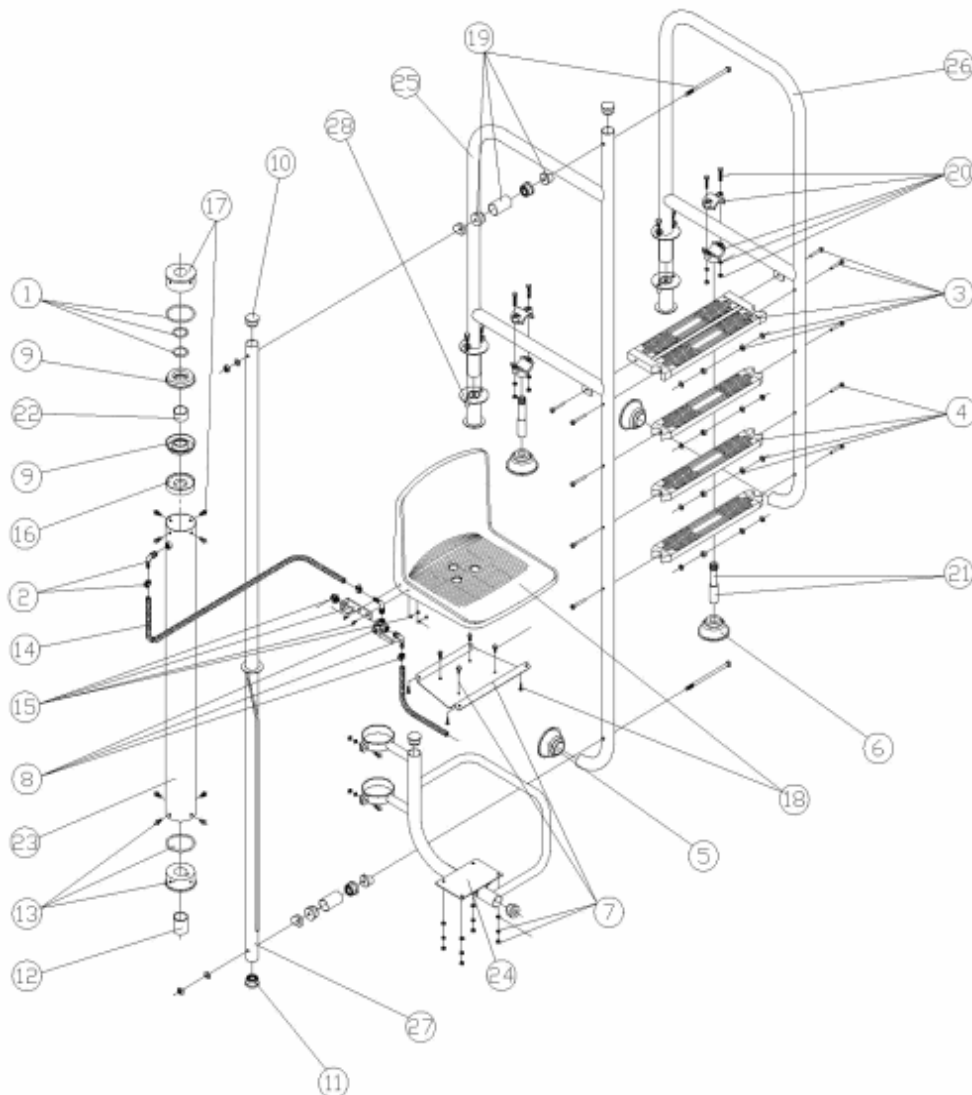
BESCHREIBUNG: **HYDRAULISCHER AUFZUG**

HINWEISE

POS	CODE	HINWEISE
25	11277R0800	PARA 11277, 28620
25	15219R0100	PARA 15219, 28619
26	11277R0900	PARA 11277, 28620
26	15219R0200	PARA 15219, 28619

CODIGO 11277, 15219, 28619, 28620, 28621, 28622

DESCRIÇÃO: ELEVADOR HIDRÁULICO



PORTUGUES

POS	CODIGO	DESCRIÇÃO	POS	CODIGO	DESCRIÇÃO
1	4401011501	JUNTAS ELEVADOR	16	4401011516	APOIO JUNTA
2	4401011502	COTOBELO E FLANGE	17	4401011517	TAMPA GUIA SUPERIOR
3	4401011503	DEGRAU SEGURANÇA ELEVADOR	18	4401011518	CADEIRA
4	4401011504	DEGRAU LUXE ELEVADOR	19	4401011519	CONJUNTO UNIÃO LIGAÇÃO
5	4401010501	BATENTE ARTICULADA	20	4401011520	ABRÇAÇADEIRA DE APOIO
6	4401011506	BATENTE ARTICULADA D 28	21	4401011521	TUBO DE APOIO
7	4401011507	PLACA ASSENTO	22	4401011505	CASQUILHOS
8	4401011508	VALVULA 3 VIAS COMPLETA	23	11277R0600	CILINDRO ELEVADOR
9	4401011509	JUNTA ELEVADOR	24	11277R0400	SUPORTE ASSENTO
10	4401070208	CASQUILHO TAPADO	25	* 11277R0800	CORRIMÃO COMPRIDO L=1000
11	4401050402	CONJ. CASQUILHOS	25	* 15219R0100	CORRIMÃO COMPRIDO L=650
12	4401011512	CASQUILHO DE SEGURANÇA	26	* 11277R0900	CORRIMÃO CURTO L=1000
13	4401011513	CASQUILHO GUIA	26	* 15219R0200	CORRIMÃO CURTO L=650
14	4401011514	TUBO ENTRADA 0,9 M.	27	11277R0100	CONJUNTO TUBO GUIA
15	4401011515	SUPORTE VÁLVULA	28	00143	ANCORA

CODIGO **11277, 15219, 28619, 28620, 28621, 28622**

DESCRIÇÃO: ELEVADOR HIDRÁULICO

OBSERVAÇÕES

POS	CODIGO	OBSERVAÇÕES
25	11277R0800	PARA 11277, 28620
25	15219R0100	PARA 15219, 28619
26	11277R0900	PARA 11277, 28620
26	15219R0200	PARA 15219, 28619