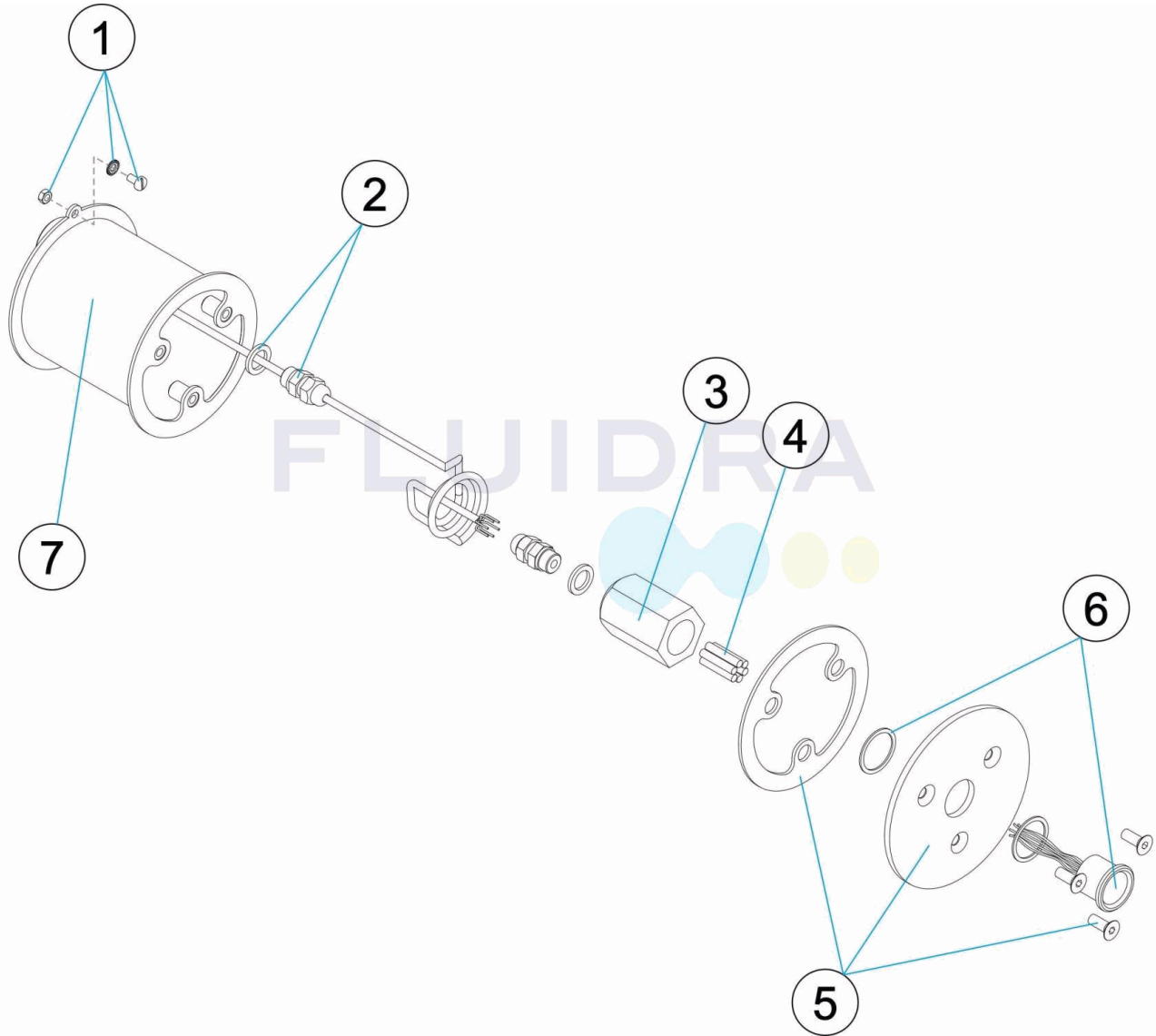


CODIGO **35759, 35760, 45219**

DESCRIPCION: **PULSADOR WELLNESS ESTANCO**



**ESPAÑOL**

POS	CODIGO	DESCRIPCION	POS	CODIGO	DESCRIPCION
1	4410010015	TOMA DE TIERRA	6	* 4410010013	PULSADOR D.28 INOX 1LED CSML2
2	4410010010	PRENSAESTOPAS M12X1,5	6	* 4410010014	PULSADOR D.28 INOX 2LED SML 1
3	4410010009	CASQUILLO ROSCA PG-16 HEMBRA	6	* 4410010006	PULSADOR D.28 SIMPLE INOX SMA2
4	* 4410010008	TERMINALES DE CONEXION	7	45219R0100	CAJA ALOJAMIENTO
5	4410010007	TAPETA + JUNTA			

**CODIGO 35759, 35760, 45219**

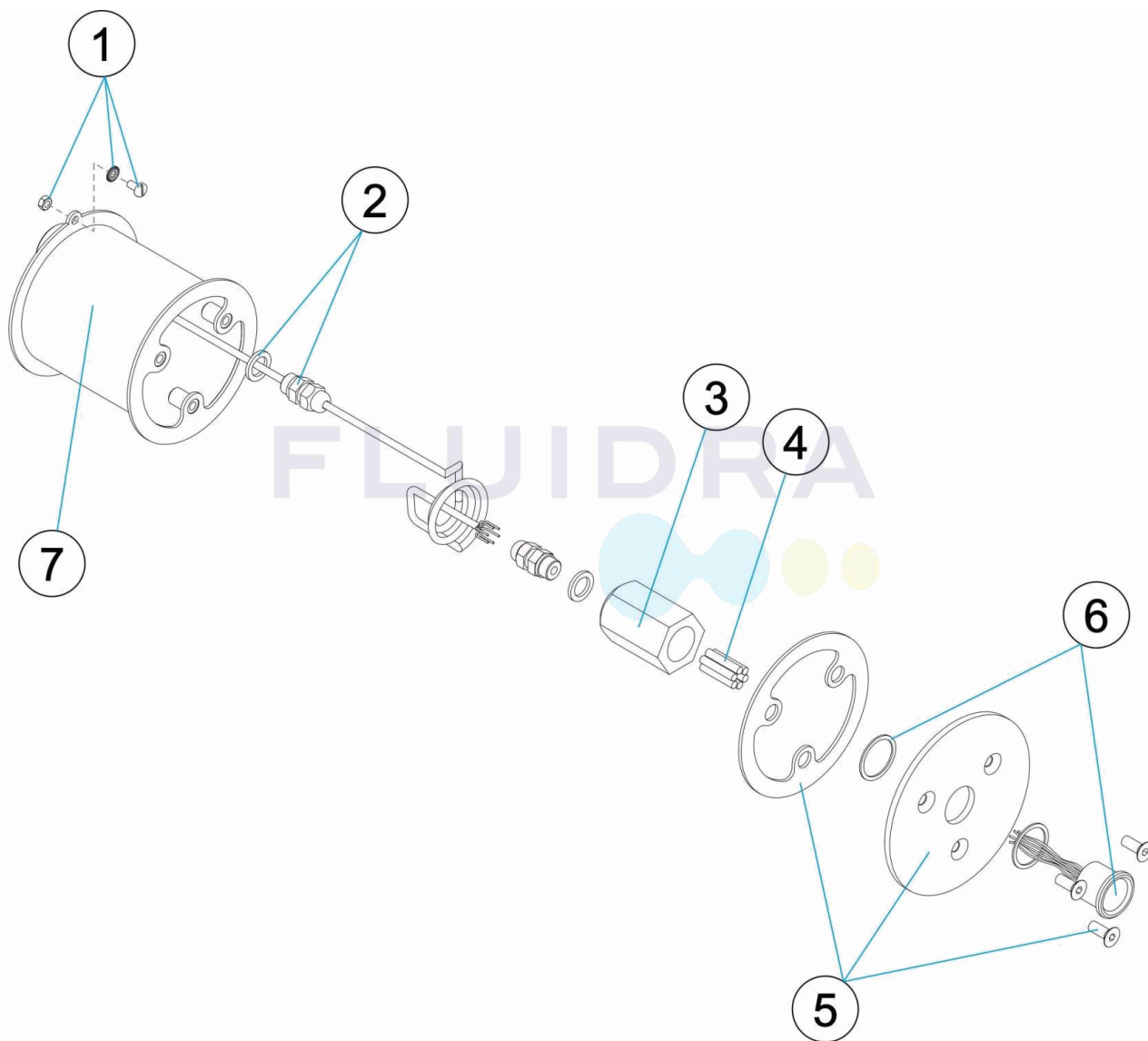
**DESCRIPCION: PULSADOR WELLNESS ESTANCO**

### OBSERVACIONES

POS	CODIGO	OBSERVACIONES
4	4410010008	PARA: 35759 [2UT], 35760 [3UT], 45219 [1UT]
6	4410010013	PARA: 35759
6	4410010014	PARA: 35760
6	4410010006	PARA: 45219

CODE **35759, 35760, 45219**

DESCRIPTION: **BOUTON-POUSSOIR WELLNESS ÉTANCHE**



**FRANCAIS**

POS	CODE	DESCRIPTION	POS	CODE	DESCRIPTION
1	4410010015	PRISE DE TERRE	6	* 4410010013	BOUTON-POUSSOIR D.28 INOX 1LED CSML2
2	4410010010	SERRE-CÂBLE M12X1,5	6	* 4410010014	BOUTON-POUSSOIR D.28 INOX 2LED SML 1
3	4410010009	CULOT VISSÉ PG-16 FEMELLE	6	* 4410010006	BOUTON-POUSSOIR D.28 SIMPLE INOX SMA2
4	* 4410010008	BORNES DE CONNEXION	7	45219R0100	BOÎTIER LOGEMENT
5	4410010007	PLAQUE + JOINT			

CODE **35759, 35760, 45219**

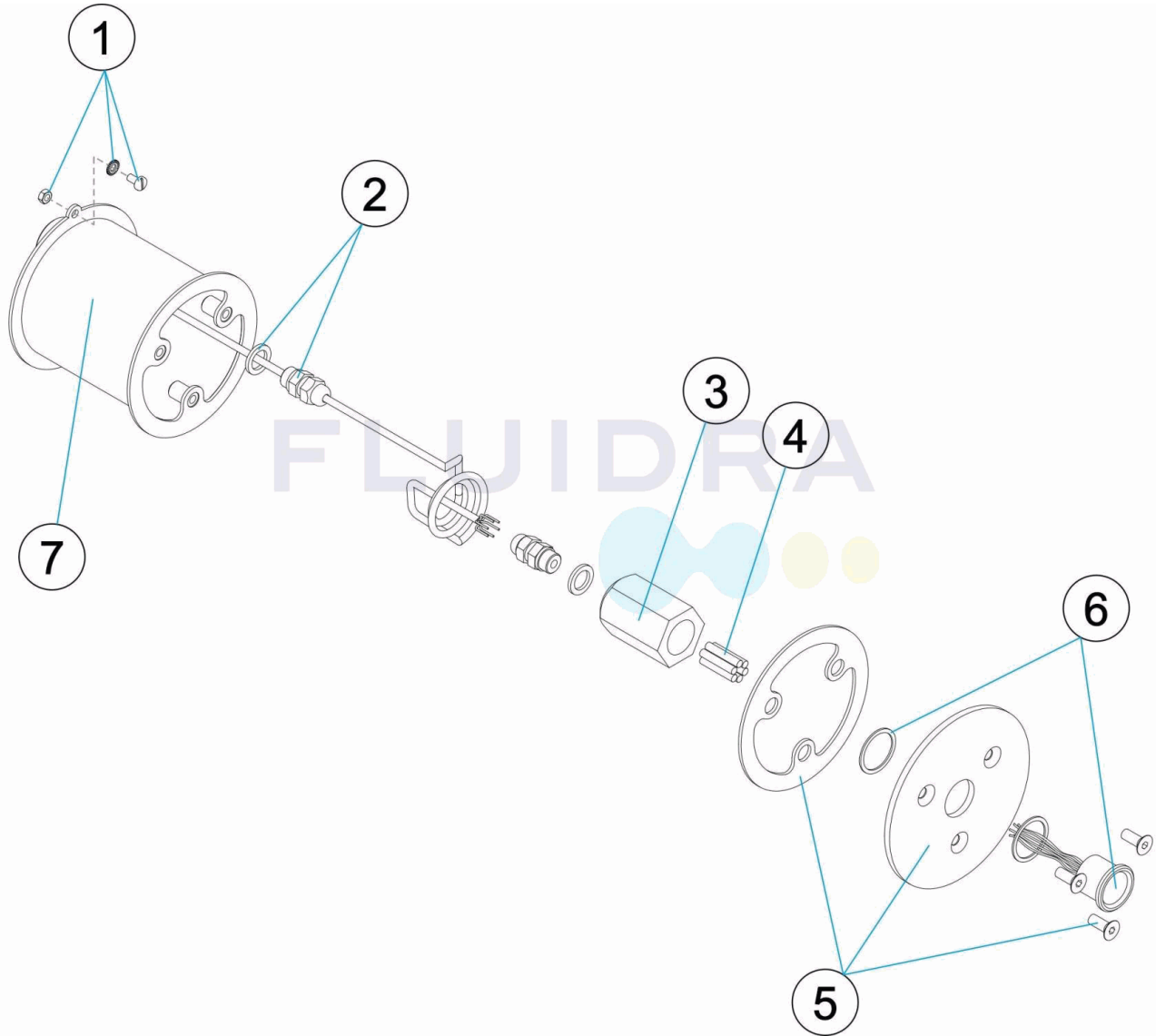
DESCRIPTION: **BOUTON-POUSSOIR WELLNESS ÉTANCHE**

**OBSERVATIONS**

POS	CODE	OBSERVATIONS
4	4410010008	POUR: 35759 [2UT], 35760 [3UT], 45219 [1UT]
6	4410010013	POUR: 35759
6	4410010014	POUR: 35760
6	4410010006	POUR: 45219

CODE **35759, 35760, 45219**

DESCRIPTION: **WELLNESS SEALED PUSH BUTTON**



**ENGLISH**

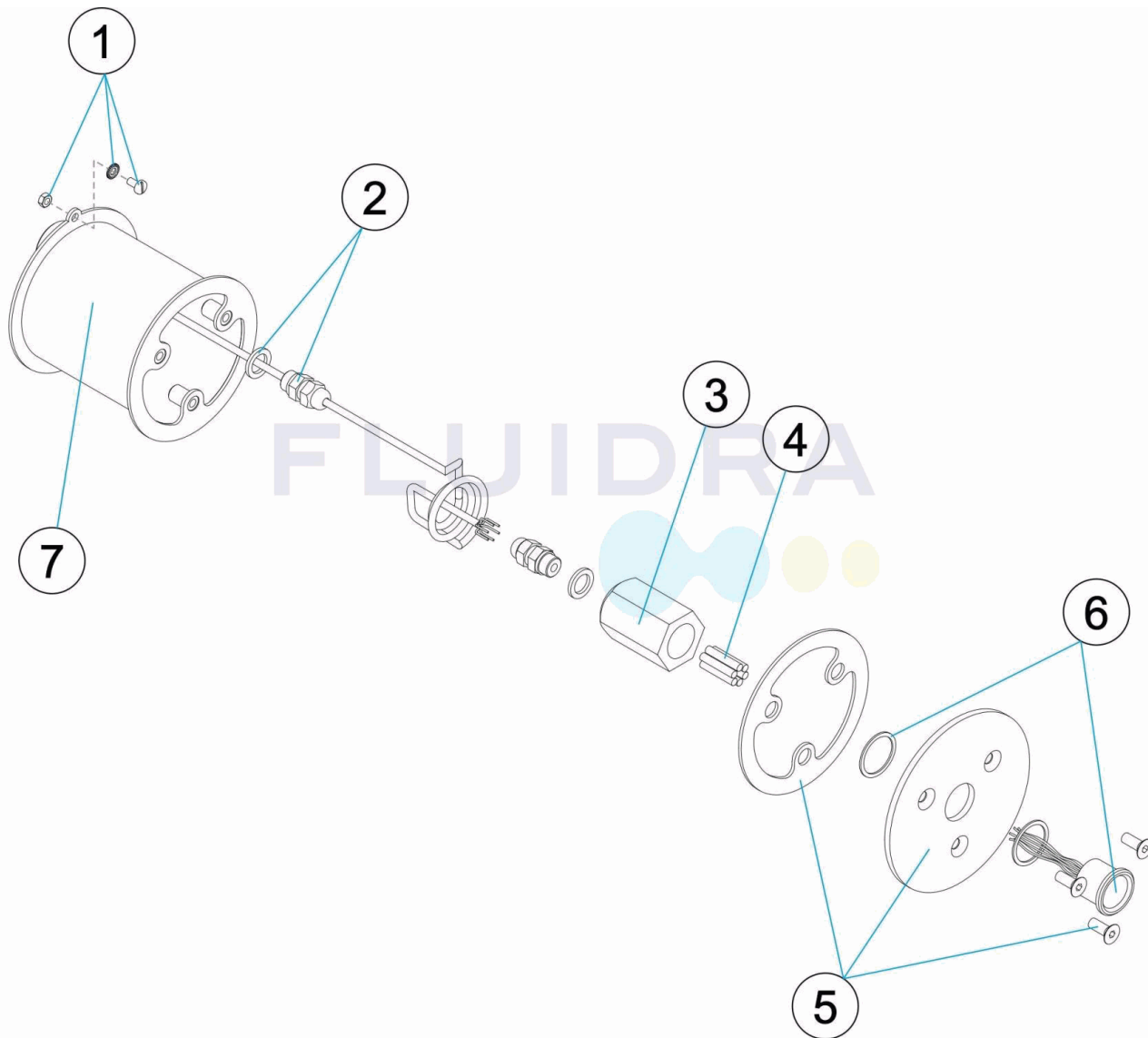
POS	CODE	DESCRIPTION	POS	CODE	DESCRIPTION
1	4410010015	EARTH CONNECTION	6	* 4410010013	D.28 INOX 1LED CSML2 PUSH BUTTON
2	4410010010	M12X1,5 PACKING GLAND	6	* 4410010014	D.28 INOX 2LED SML 1 PUSH BUTTON
3	4410010009	PG-16 FEMALE THREADED BUSHING	6	* 4410010006	D.28 SIMPLE INOX SMA2 PUSH BUTTON
4	* 4410010008	TERMINAL CONNECTORS	7	45219R0100	HOUSING
5	4410010007	PLATE + SEAL			

CODE **35759, 35760, 45219**DESCRIPTION: **WELLNESS SEALED PUSH BUTTON****OBSERVATIONS**

POS	CODE	OBSERVATIONS
4	4410010008	FOR: 35759 [2UT], 35760 [3UT], 45219 [1UT]
6	4410010013	FOR: 35759
6	4410010014	FOR: 35760
6	4410010006	FOR: 45219

CODICE **35759, 35760, 45219**

DESCRIZIONE: **PULSANTE WELLNESS SIGILLATO**



**ITALIANO**

POS	CODICE	DESCRIZIONE	POS	CODICE	DESCRIZIONE
1	4410010015	PRESA A TERRA	6	* 4410010013	PULSANTE D.28 INOX 1LED CSML2
2	4410010010	PREMISTOPPA M12X1,5	6	* 4410010014	PULSANTE D.28 INOX 2LED SML 1
3	4410010009	GHIERA FILETTO PG-16 FEMMINA	6	* 4410010006	PULSANTE D.28 SEMPLICE INOX SMA2
4	* 4410010008	TERMINALE DI CONNESSIONE	7	45219R0100	CASSA ALLOGGIO
5	4410010007	COPERCHIETTO + GIUNTURA			

CODICE **35759, 35760, 45219**

DESCRIZIONE: **PULSANTE WELLNESS SIGILLATO**

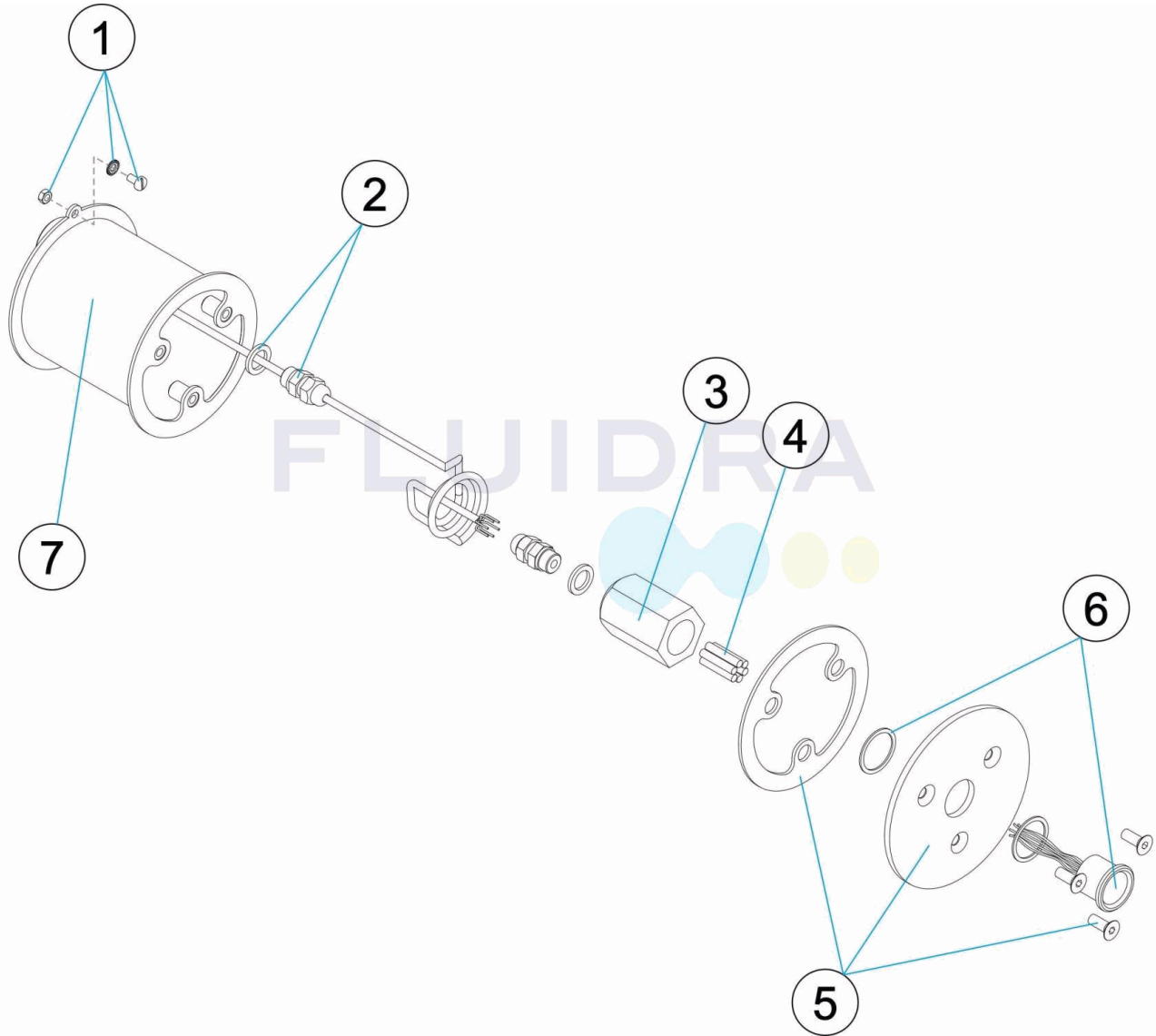
## OSSERVAZIONI

POS	CODICE	OSSERVAZIONI
4	4410010008	PER: 35759 [2UT], 35760 [3UT], 45219 [1UT]
6	4410010013	PER: 35759
6	4410010014	PER: 35760
6	4410010006	PER: 45219



CODE **35759, 35760, 45219**

BESCHREIBUNG: **DRUCKTASTER WELLNESS DICHT**



**DEUTSCH**

POS	CODE	BESCHREIBUNG	POS	CODE	BESCHREIBUNG
1	4410010015	ERDUNG	6	* 4410010013	DRUCKTASTER D.28 1LED EDELSTAHL CSML2
2	4410010010	QUETSCHVERSCHRAUBUNG M12X1,5	6	* 4410010014	DRUCKTASTER D.28 2LED EDELSTAHL SML 1
3	4410010009	FASSUNG PG16 INNENGEWINDE	6	* 4410010006	DRUCKTASTER D. 28 EINFACH EDELSTAHL SMA2
4	* 4410010008	ANSCHLÜSSE	7	45219R0100	LAGERGEHÄUSE
5	4410010007	ABSCHLUSSPLATTE UND DICHTUNG			

CODE **35759, 35760, 45219**

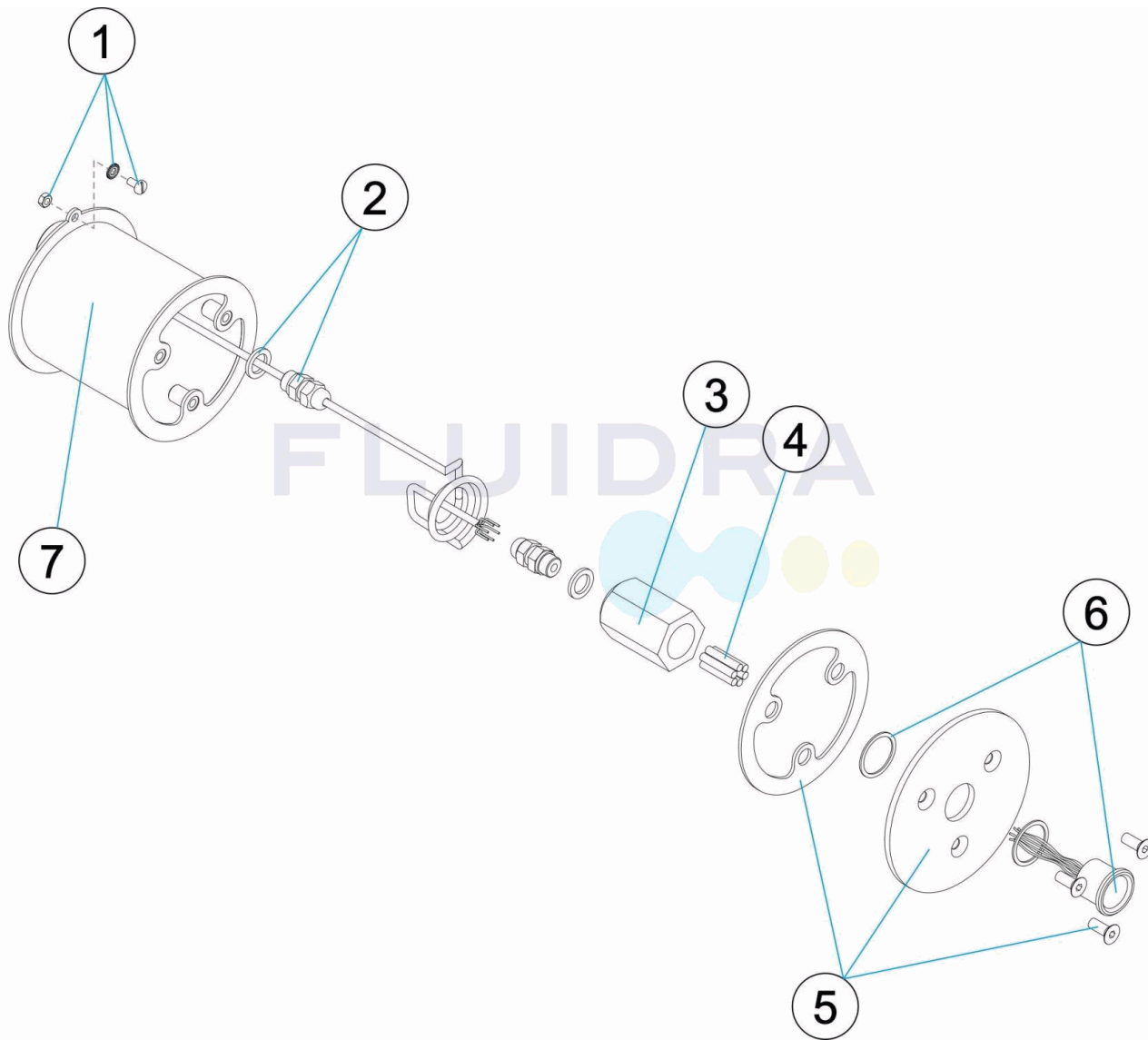
BESCHREIBUNG: **DRUCKTASTER WELLNESS DICHT**

**HINWEISE**

POS	CODE	HINWEISE
4	4410010008	FÜR: 35759 [2UT], 35760 [3UT], 45219 [1UT]
6	4410010013	FÜR: 35759
6	4410010014	FÜR: 35760
6	4410010006	FÜR: 45219

CODIGO **35759, 35760, 45219**

DESCRIÇÃO: **BOTÃO WELLNESS ESTANQUE**



**PORTUGUES**

POS	CODIGO	DESCRIÇÃO	POS	CODIGO	DESCRIÇÃO
1	4410010015	LIGAÇÃO A TERRA	6	* 4410010013	BOTÃO D.28 INOX 1LED CSML2
2	4410010010	PRENSA-ESTOPAS M12X1,5	6	* 4410010014	BOTÃO D.28 INOX 2LED SML 1
3	4410010009	CASQUILHO ROSCA PG-16 FÊMEA	6	* 4410010006	BOTÃO D.28 SIMPLES INOX SMA2
4	* 4410010008	TERMINAIS DE LIGAÇÃO	7	45219R0100	CAIXA ALOJAMENTO
5	4410010007	PLACA ESTANQUE + JUNTA			

**CODIGO 35759, 35760, 45219**

**DESCRIÇÃO: BOTÃO WELLNESS ESTANQUE**

### OBSERVAÇÕES

POS	CODIGO	OBSERVAÇÕES
4	4410010008	PARA: 35759 [2UT], 35760 [3UT], 45219 [1UT]
6	4410010013	PARA: 35759
6	4410010014	PARA: 35760
6	4410010006	PARA: 45219